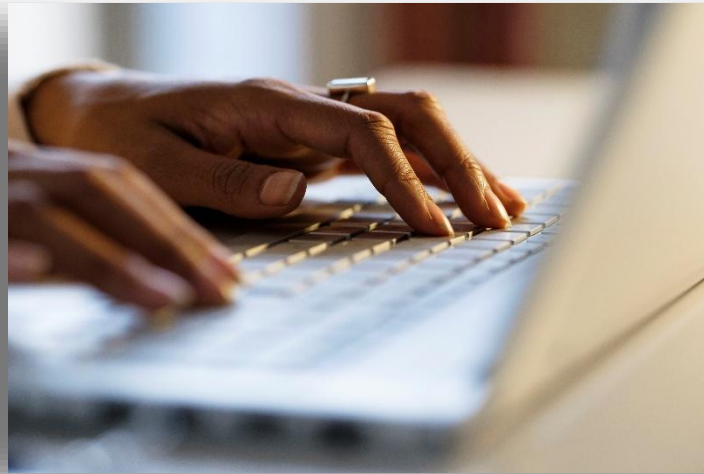


North Carolina Foster Care Education Program

ESSA Foster Care Data Collection



North Carolina Foster Care Education Program

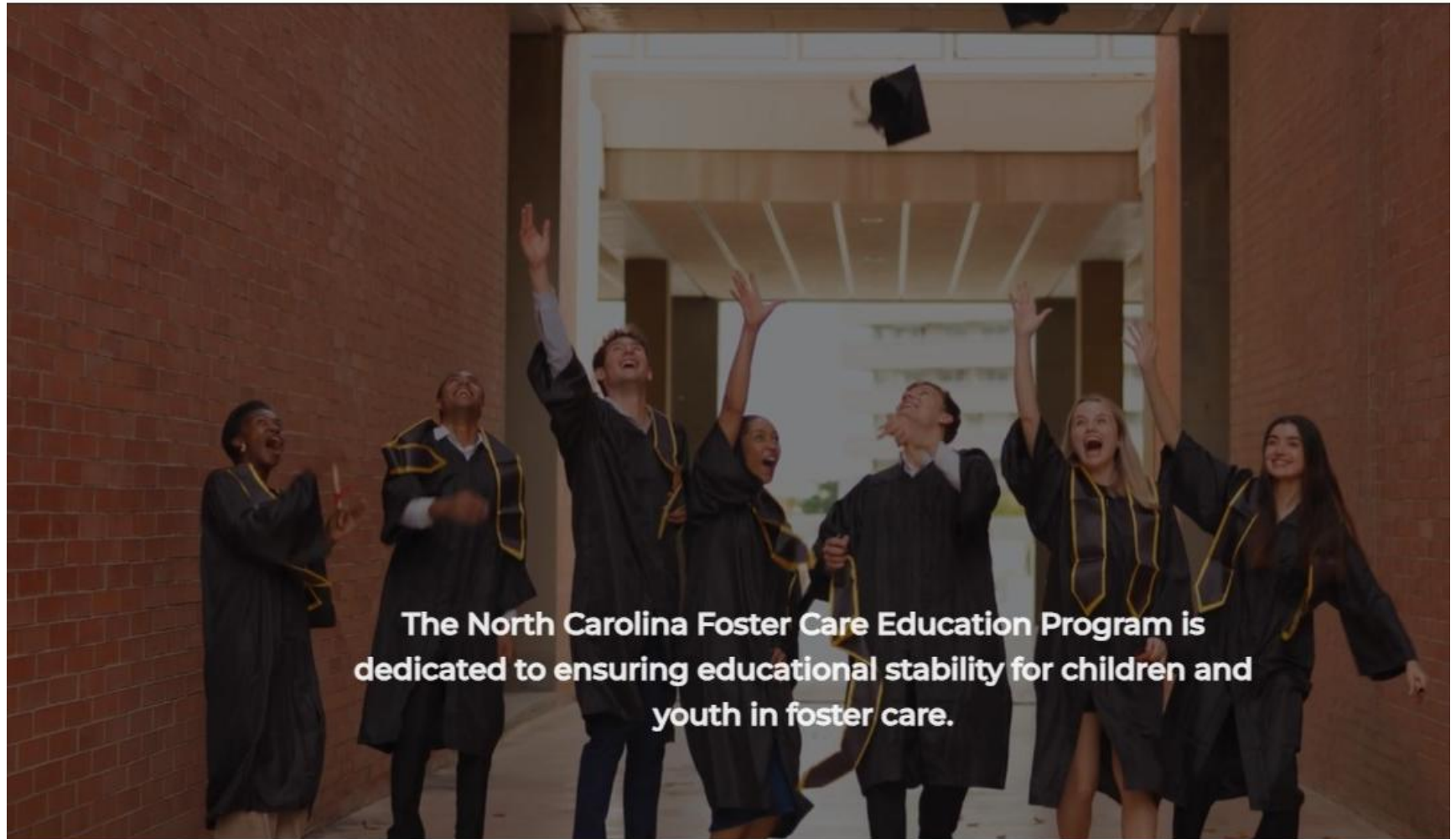
[Home](#)

[About](#)

[Local Points of Contact](#)

[Law & Guidance](#)

[Resources](#)



The North Carolina Foster Care Education Program is dedicated to ensuring educational stability for children and youth in foster care.

Data Collecting & Reporting

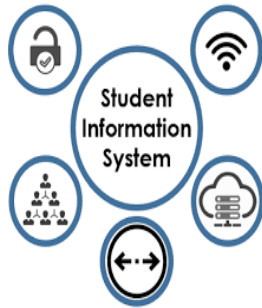
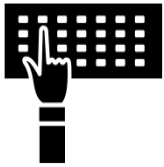
SEAs and LEAs receiving Title I subgrants report data to U.S. ED about the foster care subgroup:

- Total enrollment counts
- Achievement rates - reading, math, science
- Adjusted cohort graduation rates - 4yr and 5yr ACGR

*Subgroup data is publicly available via [ED Data Express](#)



Process: Data Collection & Reporting



LEA and School Data



SEA Data



National Data



Who to Include in Annual Reporting



Any student who has been :

- Enrolled/identified by your LEA during the current academic year as a student in foster care; or
- Identified with **“carryover foster care status”** from the previous academic year.

Foster Care Definition:

- 24-hour substitute care for children placed away from their parents or guardians for whom the Title IV-E [child welfare agency] has placement and care responsibility (Fostering Connections Act, 2008).
- Includes, but is not limited to, placements in foster family homes, foster homes of relatives, group homes, emergency shelters, residential facilities, childcare institutions, and pre-adoptive homes.

Foster Care Data Collection Schedule



- Year-Round – collect and enter data in Infinite Campus (IC) as identifications occur
- Year-Round – maintain a data-tracking system for identifications, service provisions, and interagency data sharing (cross-reference with IC)
- End-of-Year (EOY) – **all Charter/Lab LEAs submit data report by May 31st**
- EOY Report – **all Traditional LEAs submit data report by June 15th**

Internal Year-Round Data Collection



- BID meetings and outcomes
- School of origin transportation
- Attendance, academics, discipline
- Supports for educational discontinuity
- TA and joint-trainings offered
- Other collaboration with CWAs

Sample Data Tracking Tool

The screenshot shows the Microsoft Excel interface with the following components:

- Menu Bar:** File, Home, Insert, Page Layout, Formulas, Data, Review, View, Help, Acrobat.
- Home Tab Ribbon:**
 - Clipboard:** Paste, Paste and Formatting, Paste and Merge Formatting.
 - Font:** Font face (Calibri), size (16), bold (B), italic (I), underline (U), text color (A), background color.
 - Alignment:** Text alignment (left, center, right, justified), wrap text, merge cells.
 - Number:** Number format (General), currency (\$), percentage (%), decimal places (0.00).
 - Styles:** Conditional Formatting, Format as Table, Cell Styles.
 - Cells:** Insert, Delete, Format.
 - Editing:** Sort & Filter, Find & Select.
 - Analysis:** Analyze Data.
 - Adobe Acrobat:** Create PDF, Create PDF and Share link, Share via Outlook.
- Formula Bar:** Contains a formula icon and a text input field.
- Worksheet Grid:**
 - Columns:** A through N.
 - Row 1:**
 - Column A: Row number 1.
 - Column B: Blank.
 - Column C: Blank.
 - Column D: Blank.
 - Column E: Blank.
 - Column F: Blank.
 - Column G: Blank.
 - Column H: Blank.
 - Column I: Blank.
 - Column J: Blank.
 - Column K: Blank.
 - Column L: Blank.
 - Column M: Blank.
 - Column N: Blank.
 - Column O: Blank.
 - Row 2:**
 - Column A: Blank.
 - Column B: LAST NAME
 - Column C: FIRST NAME
 - Column D: STUDENT ID
 - Column E: SCHOOL
 - Column F: GRADE
 - Column G: DATE ENROLLED
 - Column H: IEP Y/N
 - Column I: 504 Y/N
 - Column J: ELL Y/N
 - Column K: NAME OF DSS COUNTY WITH CUSTODY
 - Column L: BID MEETING Y/N
 - Column M: STUDENT REMAINED IN SCHOOL OF ORIGIN Y/N
 - Column N: DISPUTE REGARDING BID OUTCOME OR TRANSPORTATION Y/N
 - Column O: ST TRAN OU ATTENE
 - Rows 3-20:** Empty rows for data entry.
- Worksheet Tab Bar:** Introduction, Annual Data, 2023-2024SY (selected), 2023-2024SY Contact Log, 2024-2025SY, 2024-2025SY ...
- Status Bar:** Select destination and press ENTER or choose Paste. Average: 65.5, Count: 149, Sum: 8515, Display Settings, 85% zoom.

Infinite Campus Access/Technical Assistance



Contact your LEA's IC Coordinator for:

- Systems access
- User rights
- Infinite Campus technical issues

Infinite Campus Data Entry - Foster Care



Foster Care (North Carolina)

Last Modified on 10/21/2024 8:21 am CDT

[Enter Foster Care Records](#) | [Print Foster Care Summary Report](#) | [Documents](#) | [Foster Care Field Descriptions](#)

Tool Search: Foster Care

The Foster Care tool indicates whether a student is in Foster Care. A start and end date is associated with each instance of a Foster Care record. These records are not tied to student enrollments or calendars. Data syncs to state editions for all scoped years (current year, M1 and P1).

The screenshot shows the 'Foster Care' data entry interface for a student named Samuel. The student's information is displayed at the top: Student # 123456, Grade 09, and DOB 03/07/2009. Below this is a toolbar with buttons for 'New', 'Save', 'Delete', 'Print Summary Report', and 'Documents'. A table lists existing Foster Care records with columns for Program Status, Start Date, End Date, and Created By. One record is shown with a Start Date of 04/01/2024 and Created By of Sampson County Schools 0429/2024. Below the table is a 'Foster Care Detail' form with fields for Start Date (04/01/2024), End Date, Program Status (01: Foster Care), School of Origin, and Comments. At the bottom, there are sections for 'State Defined Elements' (OFS Case Worker First Name, Last Name, and Phone) and 'District Defined Elements' (text field). A modification timestamp 'Modified By: Administrator, Demo 04/29/2024 01:42 PM' is also visible.

Foster Care Record

Link

[Infinite Campus Foster Care Data Entry Guide](#)

Data Collection Dates in Infinite Campus

Start Date*

- Date enrolled/entered foster care; or
- First day of school, if carryover from prior academic year

End Date

- Leave blank unless student is transferring to another LEA

- ✓ Foster care start date “value” must be within the current school year
- ✓ Foster care end date “value” must remain empty/blank if served by your LEA for the full academic year

System Reminders & Updates



- No preloaded students from the prior academic year
- *Program Participation* bulk uploads – *DSS Custody vs. Foster Care*
- **A new foster care identification must be completed each year the student is ESSA-eligible**
- *Foster care data validation reports can now be exported for POC use*

District Level Review

25-26

Context

Year
25-26

District
Alamance-Burlington Schools (010)

School
All Schools

Save **Cancel**

Health Office > Insights > Migrant > My Account > **Reporting** > Scheduling & Courses > School & District Settings > School Store > System Settings > User Management >

Reporting

Ad Hoc Reporting		Civil Rights Data Collection (CRDC)	Data Certification	Data Validation
Batch Queue	Letter Builder	CRDC Setup	Certification Category	Stored Procedure Setup
Daily Attendance Report	Letter Designer	CRDC Generate Survey Results Report	Event Certification	Validation Rules
Data Export	Percent in Attendance Heatmap Report	CRDC Maintain Survey Results	Type Membership Setup	Validation Groups
Data Viewer	Pivot Designer	CRDC Submission Flat File		Data Validation Report
Filter Designer	Student Demographic Report			
Grade Analysis Report				

NC State Reporting

- NC CTE Extract
- NC Graduation Data Verification
- NC PMR Extract

District Level Report

Data Validation Report ☆ Reporting > Data Validation > Data Validation Report

Data Validation Group Description
Foster Care

Report Data Source
 Local Dataset
 State Dataset

Output Options

Report Processing
 Generate Now
 Submit to Batch Queue

Format Type
 HTML
 CSV

Batch Queue List

Start Date: MM/DD/YYYY
End Date: MM/DD/YYYY

Report Title	Queued Time ↓	Status
No records available.		

0 - 0 of 0 items

IC Foster Care Validation Report

You **will not be required** to upload a copy of your 2025-2026SY Foster Care Data Validation Report from Infinite Campus into the EOY Qualtrics submission.

EOY Qualtrics Data Report

North Carolina Homeless Education Program



End-of-Year Infinite Campus Data Submission Certification 2025-2026SY

Deadline for response is June 15, 2026.

McKinney-Vento homeless liaisons are responsible for the collection of accurate homeless education data on students identified within their Local Education Agency (LEA) [42 U.S.C. § 11432(g)(6)(A)(i)].

The State Director requires that the following end-of-year homeless data collection certification, including the LEA's current homeless student count, be provided through this survey.

You Will Need to Answer the Following:

- LEA name
- LEA code
- POC name
- POC email
- Number of students identified during 2025-26SY
 - Enter “0” if your LEA has not identified any students in foster care during the current school year
- Number of BID Meetings your LEA participated in during 2025-26SY
 - It is understood that this number may differ from the number of students identified by your LEA

Don't Forget to....



Review your responses in the Qualtrics EOY survey



Complete the submission certification in the Qualtrics EOY survey



Download/save a PDF of your responses in the Qualtrics EOY survey



NCFCEP Staff

Dr. Yatisha Blythe

State Coordinator

Foster Care Education

743-208-3686

Yatisha.blythe@dpi.nc.gov

Lisa Phillips

State Director

EHCY & Foster Care Education

336-543-4285

Lisa.Phillips@dpi.nc.gov

Savannah Gay

EHCY Program Administrator

Charter Schools*

(743) 241-0004

Savannah.Gay@dpi.nc.gov